

VINCENT SHEPPARD



ARVIN COLLECTION LIGHTING

PRODUCT DATA SHEET

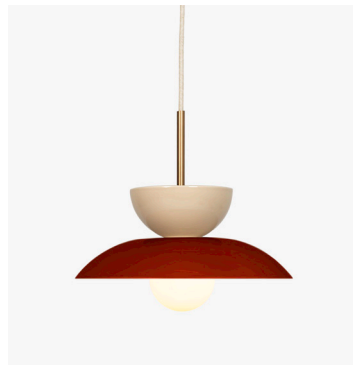
ARVIN PENDANT LAMPS



MAROON BOWL
RATTAN SHADE



MUSHROOM BOWL
RATTAN SHADE

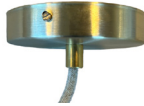


MUSHROOM BOWL
MAROON SHADE



MUSHROOM BOWL
MUSHROOM SHADE

ARVIN PENDANT LAMP

Frame	Brushed brass fixture
Shade	Rattan shade / Ceramic shade
Bulb socket	E27
Bulb included	Globe G95 LED, 2700K, 640 Lumen
Dimmer	No
Switch	No
Cord	2,5 m beige fabric
Voltage	240 V
Plug type	No
Ceiling Cap	

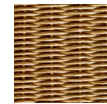
COLOURS

FRAME



Brushed
brass

SHADE RATTAN



Natural Rattan
I206

SHADE CERAMIC

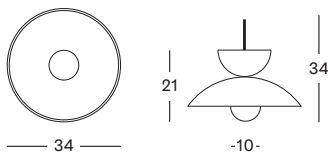


Maroon K008
Pantone: 483 C
NCS: 6030-Y70R



Mushroom K009
Pantone: 407 C
NCS: 3005-Y50R

DIMENSIONS



VARIANTS

ARVIN PENDANT LAMP	ITEM CODE	PACKAGE DIMENSION (cm/inch)		CBM (m ³ /ft ³)	WEIGHT (kg/lb)
CERAMIC MAROON / RATTAN	LA028M012K008I206	39,5 x 39,5 x 38	15,6 x 15,6 x 15	0,06 2,12	2,3 5,07
CERAMIC MUSHROOM / RATTAN	LA028M012K009I206	39,5 x 39,5 x 38	15,6 x 15,6 x 15	0,06 2,12	2,3 5,07
CERAMIC MUSHROOM / CERAMIC MAROON	LA028M012K009K008	39,5 x 39,5 x 38	15,6 x 15,6 x 15	0,06 2,12	3,3 7,28
CERAMIC MUSHROOM	LA028M012K009K009	39,5 x 39,5 x 38	15,6 x 15,6 x 15	0,06 2,12	3,3 7,28

ARVIN WALL LAMPS



RATTAN SHADE



MAROON SHADE



MUSHROOM SHADE

ARVIN PENDANT LAMP

Frame	Brushed brass
Shade	Rattan shade / Ceramic shade
Bulb socket	G9
Bulb included	3,7 W, LED, 2700K, 470 lumen
Glass	Diffused
Dimmer	No
Switch	Handswitch
Cord	2 m beige fabric
Voltage	240 V
Plug type	EU - type C, 2 pins

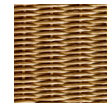
COLOURS

FRAME



Brushed
brass

SHADE RATTAN



Natural Rattan
I206

SHADE CERAMIC

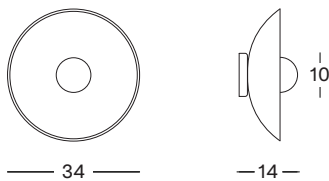


Maroon K008
Pantone: 483 C
NCS: 6030-Y70R



Mushroom K009
Pantone: 407 C
NCS: 3005-Y50R

DIMENSIONS



VARIANTS

ARVIN WALL LAMP	ITEM CODE	PACKAGE DIMENSION (cm/inch)		CBM (m ³ /ft ³)		WEIGHT (kg/lb)	
RATTAN	LA026M012I206	39 x 39 x 20	15,4 x 15,4 x 7,9	0,03	1,06	1,3	2,9
CERAMIC MAROON	LA026M012K008	39 x 39 x 20	15,4 x 15,4 x 7,9	0,03	1,06	2,2	4,9
CERAMIC MUSHROOM	LA026M012K009	39 x 39 x 20	15,4 x 15,4 x 7,9	0,03	1,06	2,2	4,9

ARVIN SWIVEL WALL LAMPS



RATTAN SHADE



MAROON SHADE



MUSHROOM SHADE

ARVIN SWIVEL WALL LAMP

Frame	Brushed brass
Shade	Rattan shade / Ceramic shade
Bulb socket	G9
Bulb included	4,8 W, LED, 2700K, 580 lumen
Glass	Diffused
Dimmer	No
Switch	Handswitch
Cord	4 m beige fabric
Voltage	240 V
Plug type	EU - type C, 2 pins

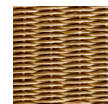
COLOURS

FRAME



Brushed brass

SHADE RATTAN



Natural Rattan
I206

SHADE CERAMIC

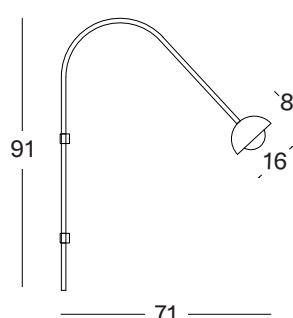
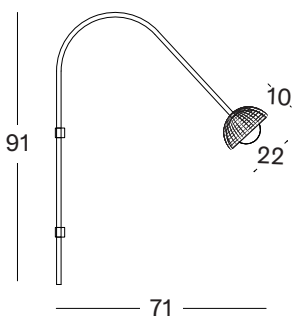


Maroon K008
Pantone: 483 C
NCS: 6030-Y70R



Mushroom K009
Pantone: 407 C
NCS: 3005-Y50R

DIMENSIONS



VARIANTS

ARVIN SWIVEL WALL LAMP

RATTAN

CERAMIC MAROON

CERAMIC MUSHROOM

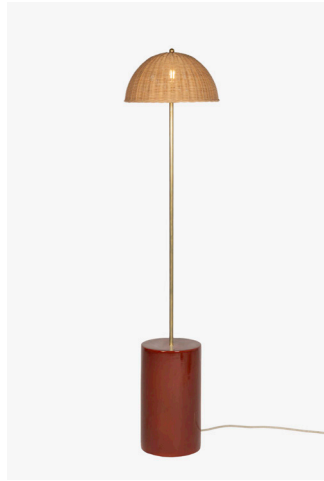
ITEM CODE

LA027M012I206

LA027M012K008

LA027M012K009

ARVIN FLOOR LAMPS STRAIGHT



MAROON BASE
RATTAN SHADE



MUSHROOM BASE
RATTAN SHADE

ARVIN FLOOR LAMP STRAIGHT

Frame	Brushed brass
Shade	Rattan shade
Base	Ceramic
Bulb socket	E27
Bulb included	No
Dimmer	No
Switch	Footswitch
Cord	3,5 m beige fabric
Voltage	240 V
Plug type	EU - type C, 2 pins

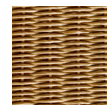
COLOURS

FRAME



Brushed
brass

SHADE RATTAN



Natural Rattan
I206

SHADE CERAMIC



Maroon K008

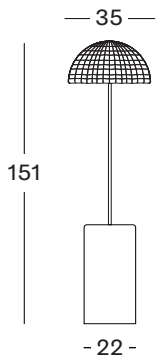
Pantone: 483 C
NCS: 6030-Y70R



Mushroom K009

Pantone: 407 C
NCS: 3005-Y50R

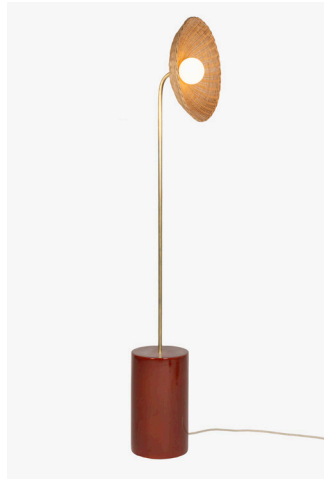
DIMENSIONS



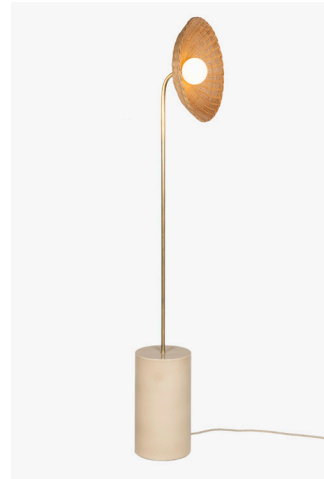
VARIANTS

ARVIN FLOOR LAMP STRAIGHT	ITEM CODE	PACKAGE DIMENSION (cm/inch)		CBM (m ³ /ft ³)	WEIGHT (kg/lb)	
CERAMIC MAROON BASE / RATTAN	LA030K008M012I206	146 x 43 x 39	57,5 x 17 x 15,4	0,25	8,83	12,1 26,68
CERAMIC MUSHROOM BASE / RATTAN	LA030K009M012I206	146 x 43 x 39	57,5 x 17 x 15,4	0,25	8,83	12,1 26,68

ARVIN FLOOR LAMPS CURVED



MAROON BASE
RATTAN SHADE



MUSHROOM BASE
RATTAN SHADE

ARVIN FLOOR LAMP CURVED

Frame	Brushed brass
Shade	Rattan shade
Base	Ceramic
Bulb socket	E9
Bulb included	4 W, LED, 2700K, 480 lumen, dimmable
Glass	Diffused
Dimmer	Yes
Switch	Handswitch with dimmer
Cord	3,5 m beige fabric
Voltage	240 V
Plug type	EU - type C, 2 pins

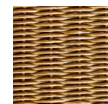
COLOURS

FRAME



Brushed
brass

SHADE RATTAN



Natural Rattan
I206

SHADE CERAMIC

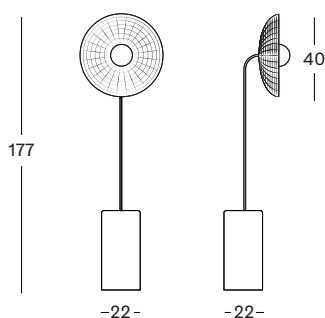


Maroon K008
Pantone: 483 C
NCS: 6030-Y70R



Mushroom K009
Pantone: 407 C
NCS: 3005-Y50R

DIMENSIONS



VARIANTS

ARVIN FLOOR LAMP CURVED

CERAMIC MAROON BASE / RATTAN

CERAMIC MUSHROOM BASE / RATTAN

ITEM CODE

LA029K008M012I206

LA029K009M012I206

MAINTENANCE AND CARE

GLAZED CERAMIC

Glazed ceramic is a natural material that retains its beauty for years with proper care. Our ceramic pieces are handcrafted, which may result in subtle irregularities in shape. This artisanal process gives each piece its unique character.

To keep your glazed ceramics in optimal condition, we recommend dusting them regularly with a soft, damp cloth. Avoid using abrasive sponges or harsh cleaning agents, as these may damage the surface. Additionally, it is important to prevent prolonged exposure to moisture to avoid staining.

Although glazed ceramic is naturally heat-resistant, we advise against direct contact with extremely hot objects to prevent thermal shock and potential damage.

BRASS

Brass is a durable material that can develop a natural patina over time. This aging process adds to the character of the material, but with proper care, you can maintain its original shine.

To keep brass in optimal condition, we recommend dusting the surface regularly with a dry, soft cloth. For light dirt or smudges, use a damp cloth and dry immediately. Avoid abrasive sponges or harsh cleaning agents, as these may damage the brass.

If desired, brass can be polished with a specialized brass cleaner. Always test the product on a small, inconspicuous area first. Do not use acidic or corrosive substances such as vinegar or lemon juice, as they can damage the material. Additionally, avoid prolonged exposure to moisture to prevent stains and oxidation.

RATTAN

Rattan is a very flexible material with distinct characteristics, thus allowing to create beautiful, unique and solely handcrafted designs with it.

It's therefore no wonder that rattan is one of the favourite materials at Vincent Sheppard to work with.

As a bonus, rattan is easy to maintain: clean it every now and then with moist towel and some natural soap, and you'll be able to enjoy it